

Notes.
All dimensions and levels on site are to be checked prior to commencement of work.
This drawing is the copyright of the Edwards Irish Partnership LLP.

REFERENCE	STRUCTURAL OPENING W x H	LOCATION	SAFETY GLAZING	TRICKLE VENTILATION REQUIREMENT	REMARKS
WGO1	1200 x 1200	Study	Yes	10,000mm ²	
WGO2	630 x 1050	Cloakroom	Yes	2500mm ²	obscure glazing
WGO3	1770 x 1200	Living	Yes	10,000mm ²	
WGO4	1200 x 1200	Kitchen/Breakfast	Yes	5,000mm ²	
WGO5	1200 x 1200	Kitchen/Breakfast	Yes	5,000mm ²	
WGO6	1200 x 1050	Kitchen/Breakfast	Yes	5,000mm ²	
WFO1	1200 x 1200	Bedroom 2		10,000mm ²	
WFO2	1200 x 1200	En-suite 2		2500mm ²	obscure glazing
WFO3	1770 x 1200	Bedroom 4		10,000mm ²	
WFO4	1770 x 1200	Bedroom 1		10,000mm ²	
WFO5	1200 x 1050	En-suite 1		2500mm ²	obscure glazing
WFO6	1770 x 1200	Bedroom 3		10,000mm ²	
WFO7	630 x 1050	Bedroom 3		2500mm ²	
WFO8	630 x 1050	Bedroom 2		2500mm ²	
RLO1	780 x 980	Bathroom		2500mm ²	Velux
EDO1	1350 x 2100	Hall	Yes		1000 door, mobility threshold
EDO2	3600 x 2100	Family/Dining	Yes	10,000mm ²	
EDO3	932 x 2100	Utility			

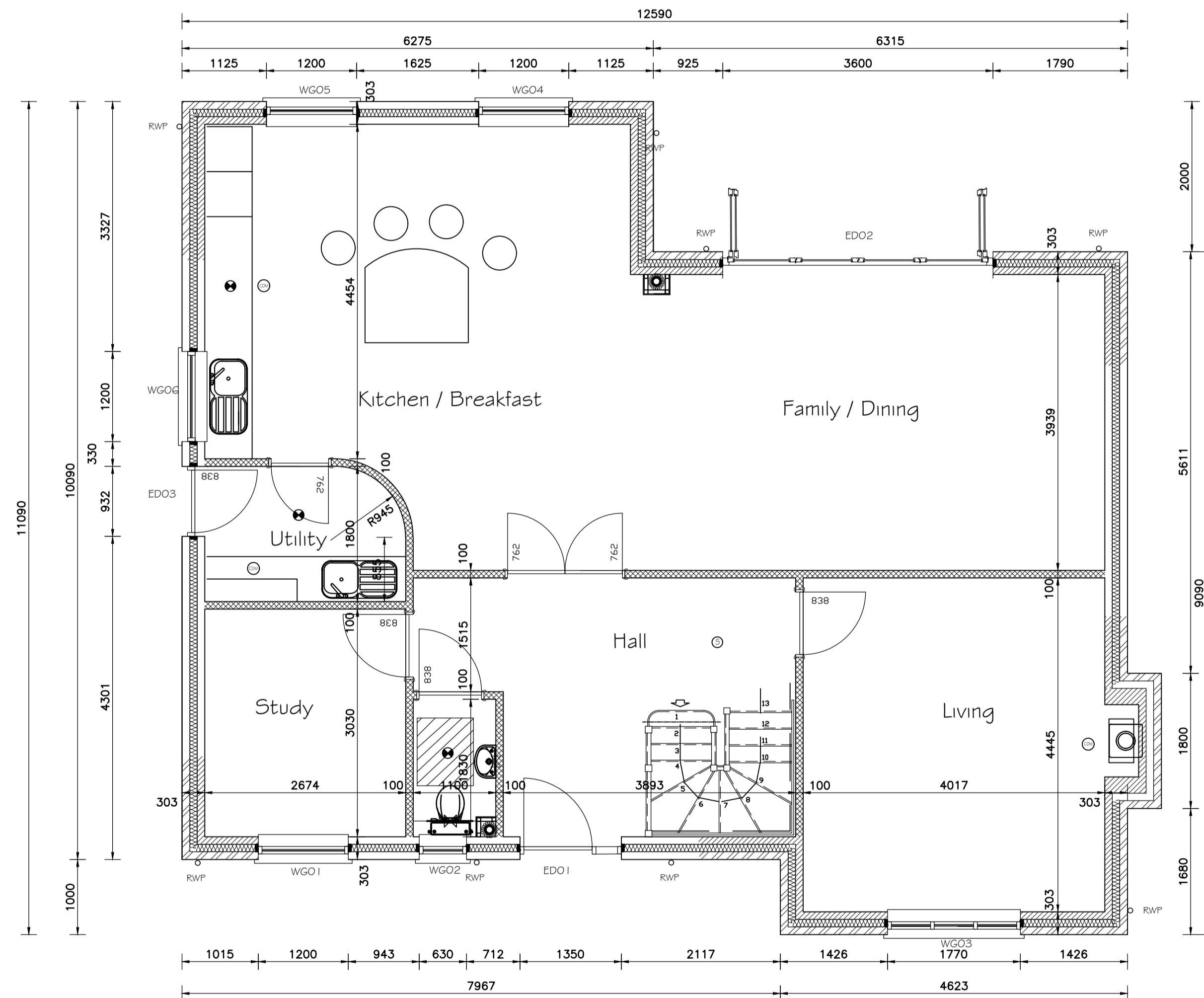
ELECTRICAL LEGEND

FOR POSITION OF ELECTRICS IN KITCHEN INCLUDING FITTINGS REFER TO SPECIALIST KITCHEN SUB-CONTRACTORS DETAILS.

FOR POSITION OF INCOMING SERVICES REFER TO SUB-STRUCTURE DRAWINGS + CIVIL ENGINEERS DRAWINGS.

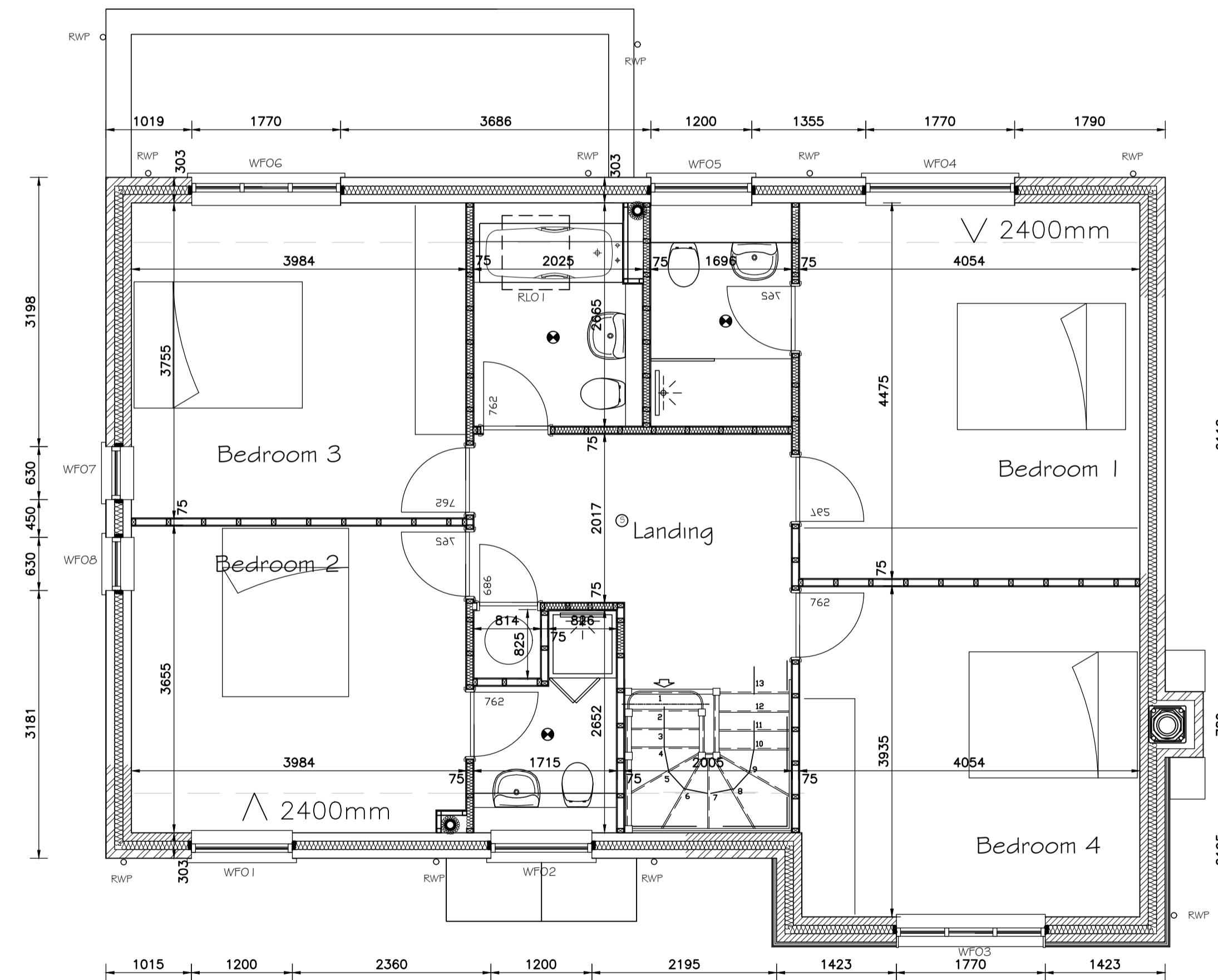
<ul style="list-style-type: none"> 1.3 AMP SWITCHED SOCKET OUTLET 1.3 AMP DOUBLE SWITCHED SOCKET OUTLET 2 AMP TABLE LAMP CIRCUIT POINTS SS0 ABOVE WORKTOP LEVEL UNSWITCHED SINGLE SOCKET CONTROLLED BY ACP (SEE PLAN WORKTOP), EXCEPT FAN SOCKETS TO BE AT HIGH LEVELS FUSED SWITCHED SPIR HIGH LEVEL SWITCHED FUSED SPIR WITH NEON INDICATOR FUSED SPIR 1.3 A BLANKED OUTLET FOR SHOWER POINT 1.3 AMP SWITCHED SPIR WITH PILOT (HW SWH) CENTRAL FUSED MCB 6300 GRID SWITCH CCU - TO CONTROL AGA LIGHT SWITCH 2/3 WAY LIGHT SWITCH PULL CORD LIGHT SWITCH PUSH BUTTON LIGHT SWITCH 1.00 ABOVE FTL SWITCH WITH INDICATOR FOR LOFT LIGHT RECESSED LED DOWNLIGHTS (IP44 WATERPROOF SPARK IN BATHROOMS, EN-SUITE + SHOWER ROOMS) LOW ENERGY PENDANT FITTING LOW ENERGY BATTEN LIGHT FITTING LOW ENERGY BATTEN LIGHT FITTING FIXED OVER DOOR LOW ENERGY VAPOR PROOF EXTERNAL LIGHT WITH FIX AND DRAWN TO DURA, GL UP LOW ENERGY FLUSH WALL MOUNTED LIGHT FITTING FLOURESCENT STRIPLIGHT FELMEX LIGHT WIRING ONLY (i.e. OUTSIDE REAR LIGHT FITTING) COOKER CONTROL UNIT WITH SS0 (SEE PLAN) 1.3 A BLANKED OUTLET FOR SHOWER POINT FITTED AS CUSTOMER EXTRA 	<ul style="list-style-type: none"> TELEPHONE POINT 500mm ABOVE FTL TV AERIAL SOCKET 500MM ABOVE FTL DATA POINT SATELLITE POINT CONSUMER UNIT WITH HW 2ND PHASE FUSED SW SMOKE DETECTOR - SELF CONTAINED, MANDI RED - INTERCONNECTED HEAT DETECTOR GASBORN MONOXIDE DETECTOR/ALARM BOLLER PROGRAMMER THERMOCUTS BELL PUSH DOOR CHIME ENTRY PHONE ALARM CONTROL PANEL - wiring only ALARM BELL SOUNDER EXTERNAL ALARM BELL BOX ALARM COOK CONTACT ALARM KEYPAD ELECTRICITY METERS AT HIGH LEVEL ON BOARDS ELECTRICITY METERS EXTERNAL BOX GAS METERS EXTERNAL BOX GAS POINT EXTERNAL COLD WATER TAP BOLLER MECHANICAL VENT 3kW IMMERSION HEATER ENERGY DISPLAY DEVICE ROTCRY SINGLE PHASE ISOLATOR LOCATED AT HIGH LEVEL EXIT SIGN WITH EMERGENCY BACK-UP PACK FIRE ALARM BREAK GLASS CALL POINT SMOKE DETECTOR AND SOUNDER
--	--

Switches and socket outlet positions to comply with Part M4 of the Building Regulations.
(To be set between 450mm and 1200mm above finished floor level) Socket outlets TV and BT points, Radiator controls to be set at a common height of between 450 and 600mm above finished floor level.
Door handles, switches, thermostats, alarm bells to be set at a common height of between 900 and 1200 above finished floor level (see window roomings).
Consumer units to be set between 1350 and 1450 above FTL.



All dimensions stated are above the plinth

GROUND FLOOR PLAN PLOT 1



FIRST FLOOR PLAN

Project
Land Adjacent to Longpatch Easthampstead Road Wokingham

Client
Siloam Construction

Drawing
General Arrangement - Plot 1 Floor Plans

Scale **1: 50** Date **Jan 2017**



The Edwards Irish Partnership LLP
Architects & Surveyors
Suite 8, Market House, 19-21 Market Place, Wokingham, Berks. RG40 1AP
Tel: 0118-989-4403 Fax: 0118-989-4383
E-mail: email@edwardsirish.com

Job **2274** Dwg. **111**
CAD REF: PROJECTS CAD-REF