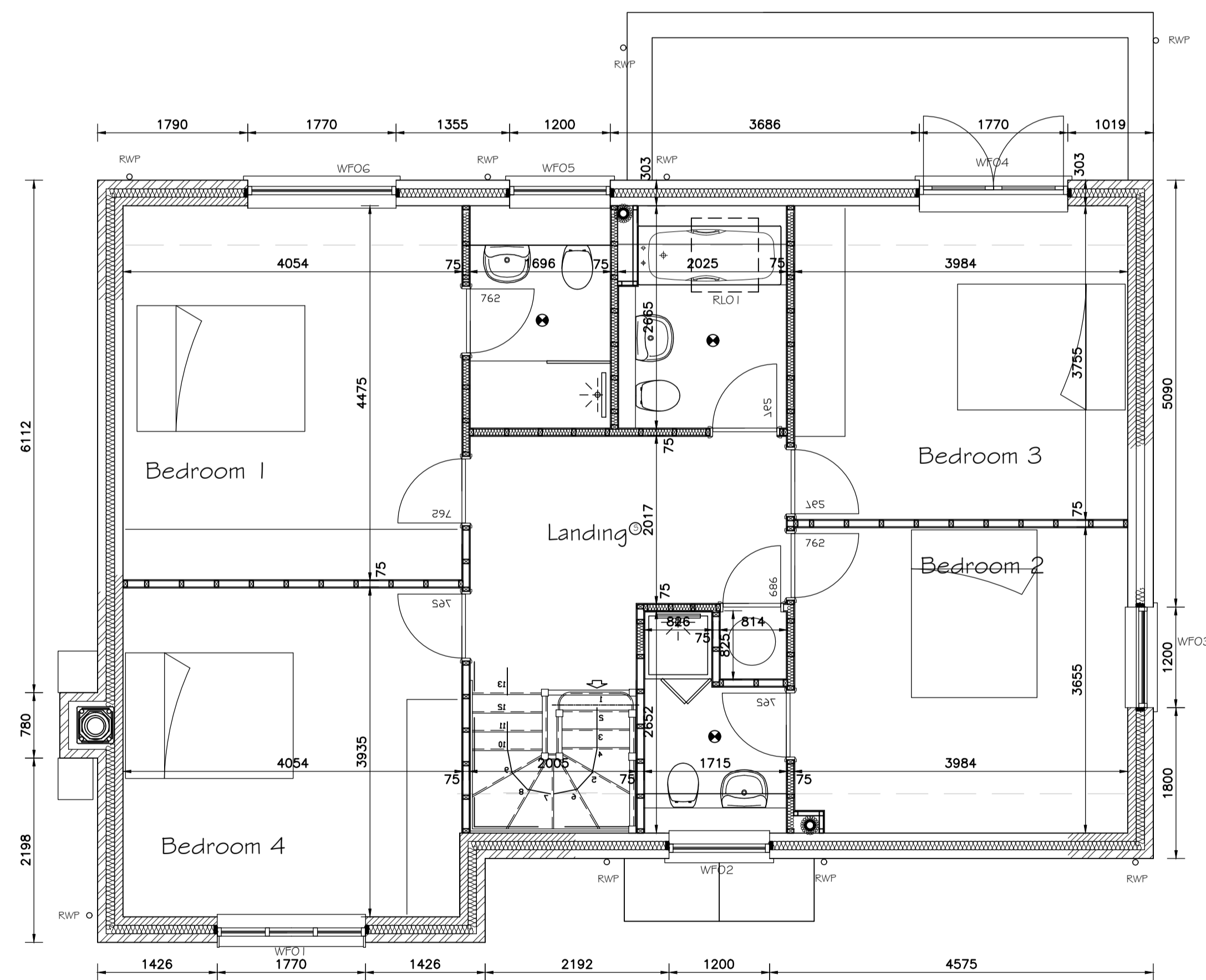
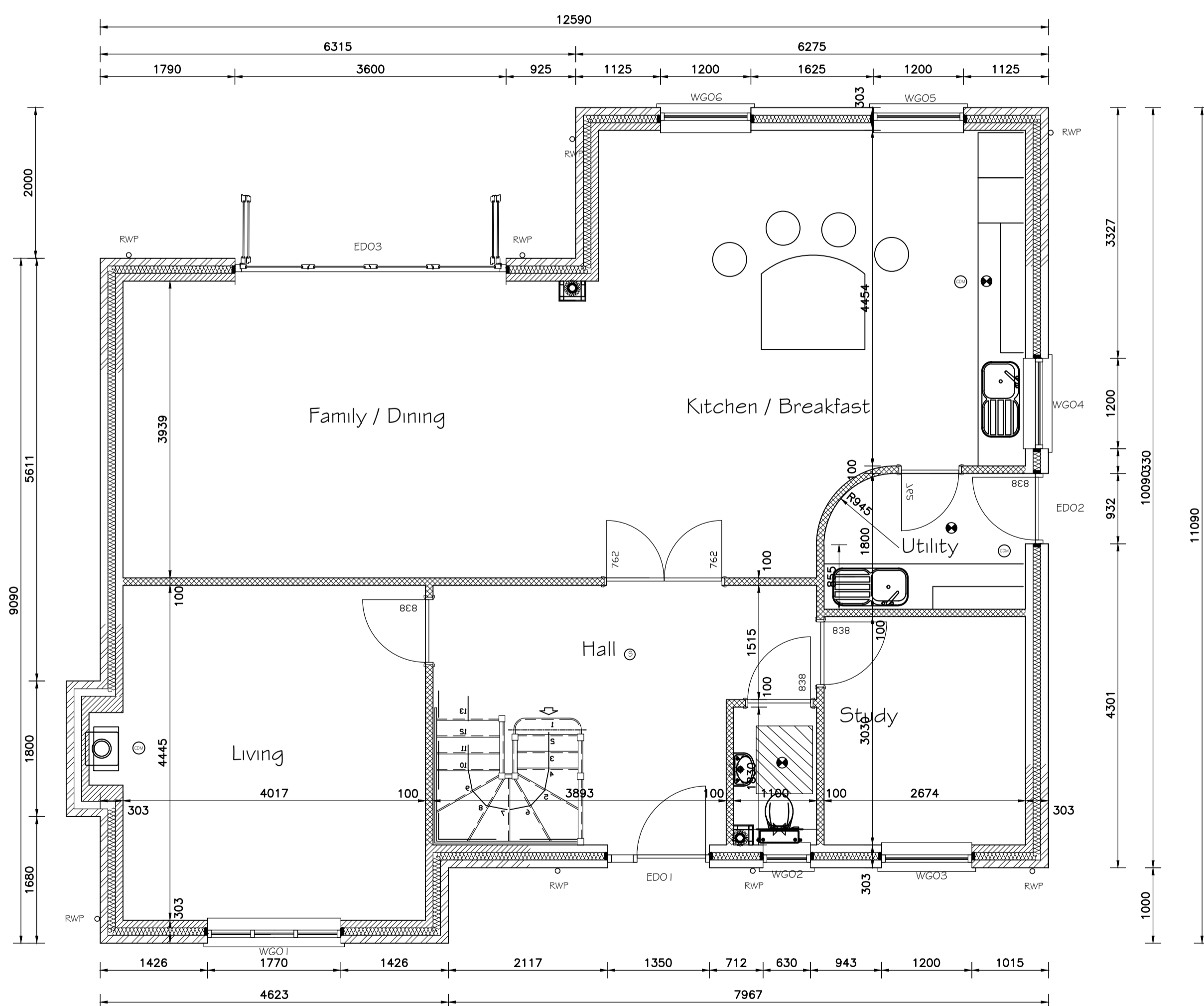


Notes.
All dimensions and levels on site are to be checked prior to commencement of work.
This drawing is the copyright of the Edwards Irish Partnership LLP.

REFERENCE	STRUCTURAL OPENING W x H	LOCATION	SAFETY GLAZING	TRICKLE VENTILATION REQUIREMENT	REMARKS
WGO1	1770 x 1200	Living	Yes	10,000mm ²	
WGO2	630 x 1050	Cloakroom	Yes	2500mm ²	obscure glazing
WGO3	1200 x 1200	Study	Yes	10,000mm ²	
WGO4	1200 x 1050	Kitchen/Breakfast	Yes	5,000mm ²	
WGO5	1200 x 1200	Kitchen/Breakfast	Yes	5,000mm ²	
WGO6	1200 x 1200	Kitchen/Breakfast	Yes	5,000mm ²	
WFO1	1770 x 1200	Bedroom 4		10,000mm ²	
WFO2	1200 x 1200	En-suite 2		2500mm ²	obscure glazing
WFO3	1200 x 1200	Bedroom 2		10,000mm ²	
WFO4	1770 x 1875	Bedroom 3		10,000mm ²	
WFO5	1200 x 1050	En-suite 1		2500mm ²	obscure glazing
WFO6	1770 x 1200	Bedroom 1		10,000mm ²	
RLD1	780 x 980	Bathroom		2500mm ²	Velux
EDO1	1350 x 2100	Hall	Yes		1000 door, mobility threshold
EDO2	932 x 2100	Utility			
EDO3	3600 x 2100	Family/Dining	Yes	10,000mm ²	

ELECTRICAL LEGEND	
FOR POSITION OF ELECTRICS IN KITCHEN INCLUDING FITTINGS REFER TO SPECIALIST KITCHEN SUB-CONTRACTORS DETAILS.	FOR POSITION OF INCOMING SERVICES REFER TO SUB-STRUCTURE DRAWINGS & CIVIL ENGINEERS DRAWINGS.
1.3 AMP SWITCHED SOCKET OUTLET	TELEPHONE POINT 500mm ABOVE FTL
1.3 AMP DOUBLE SWITCHED SOCKET OUTLET	TV AERIAL SOCKET 500mm ABOVE FTL
2 AMP TABLE LAMP CIRCUIT POINTS	DATA POINT
850 ABOVE WORKTOP LEVEL	SATELLITE POINT
UNSWITCHED SINGLE SOCKET CONTROLLED BY ACP (SEE ACP WORKSHEET), EXCEPT FAN SOCKETS TO BE AT HIGH LEVELS	CONSUMER UNIT WITH Rn 2nd PHASE PUEWAS
FUSED SWITCHED SPUR	SMOKE DETECTOR - SELF CONTAINED, HAND REED, INTERCONNECTED
HIGH LEVEL SWITCHED FUSED SPUR WITH NEON INDICATOR	HEAT DETECTOR
FUSED SPUR	GARDEN MONITOR DETECTOR/ALARM
1.3 A BLANKED OUTLET FOR SHOWER POINT	BOILER PROGRAMMER
CENTRAL FUSED MAIN 8000 GRID SWITCH	HYDROBUST
CCU - TO CONTROL AGA	BELL PUSH
LIGHT SWITCH	DOOR CHIME
2/3 WAY LIGHT SWITCH	ENTRY PHONE
PULL CORD LIGHT SWITCH	ALARM CONTROL PANEL - wiring only
SWITCH WITH INDICATOR FOR LOFT LIGHT	ALARM BELL SOUNDER
RECESSED LED DOWNLIGHTS (IP4 UNWATERPROOF SPARK/SAFETY/ROCKWOL + SPARKLE ROCKWOL)	EXTERNAL ALARM BELL BOX
LOW ENERGY PENDANT FITTING	ALARM COOK CONTACT
LOW ENERGY BATTERY LIGHT FITTING	ALARM KEYPAD
LOW ENERGY WAFER PROOF EXTERNAL LIGHT WITH FIX AND DRAWN TO DURA, UK IP	ELECTRICITY METERS AT HIGH LEVEL ON BOARD
LOW ENERGY FLUSH WALL MOUNTED LIGHT FITTING	ELECTRICITY METERS EXTERNAL BOX
FLOURESCCENT STRIPLIGHT	GAS METERS EXTERNAL BOX
FELMET LIGHT	GAS POINT
WIRING ONLY i.e. OUTSIDE REAR LIGHT FITTING	EXTERNAL COLD WATER TAP
COOKER CONTROL UNIT WITH 500 SOUWRY	BOILER
1.3 A BLANKED OUTLET FOR SHOWER POINT FITTED AS CUSTOMER EXTRA	MECHANICAL VENT
	3kW IMMERSION HEATER
	ENERGY DISPLAY DEVICE
	ROCKWOL SINGLE PHASE ISOLATOR LOCATED AT HIGH LEVEL
	EXIT SIGN WITH EMERGENCY BACK-UP PACK
	FIRE ALARM BELL GLASS CALL POINT
	SMOKE DETECTOR AND SOUNDER



All dimensions stated are above the plinth

GROUND FLOOR PLAN PLOT 2

FIRST FLOOR PLAN

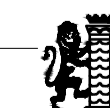
Rev A: Feb 2017: Window WFO3 relocated

Project
**Land Adjacent to
Longpatch
Easthampstead Road
Wokingham**

Client
Siloam Construction

Drawing
**General Arrangement - Plot 2
Floor Plans**

Scale **1: 50** Date **Jan 2017**



The Edwards Irish Partnership LLP
Architects & Surveyors
Suite 8, Market House, 19-21 Market Place, Wokingham, Berks, RG40 1AP
Tel: 0118-989-4403 Fax: 0118-989-4383
E-mail: email@edwardsirish.com

Job **2274** Dwg. **121A**

CAD REF:PROJECTS CAD-REF